

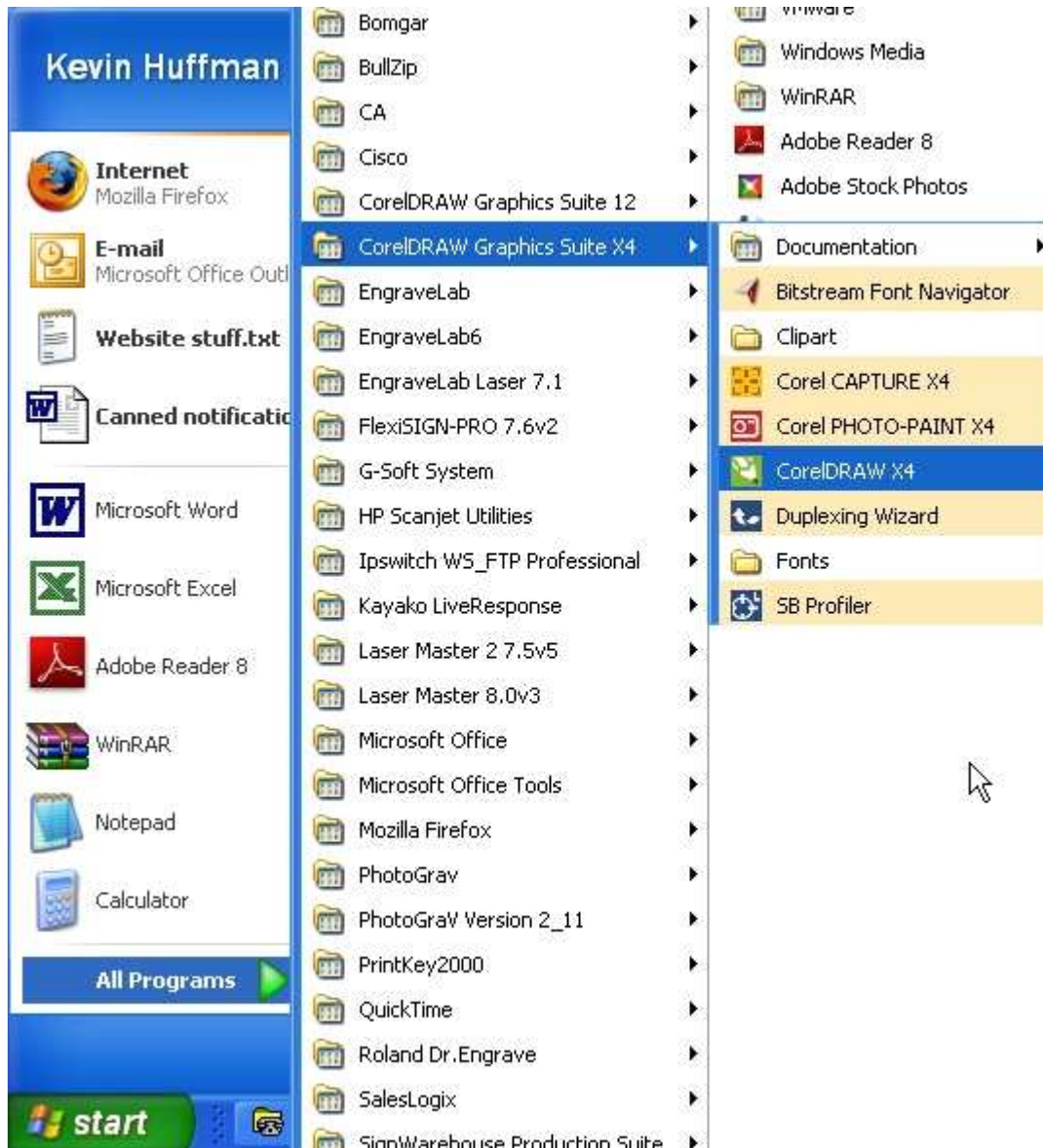
Resetting Corel Draw x4

This document will show you how to reset your software back to the day you installed it. This will get rid of any unusual or weird things that may be happening in the Corel Draw software.

MAKE SURE YOUR SOFTWARE IS CLOSED.

If you are unsure that the Corel Draw is closes or if this process doesn't work, restart the computer then follow these instructions again.

1. Click your start button, then choose All Programs, find the Corel Draw directory. Press the F8 button on your Keyboard while clicking the Corel Draw x4.



2. You will see a box that says "Are you sure you want to overwrite the current workspace with the factory defaults?".
If you do not see this window, this was not successful, close the program and try again.



3. After clicking Yes, your software will open with the default settings.

